



# Fox Delta

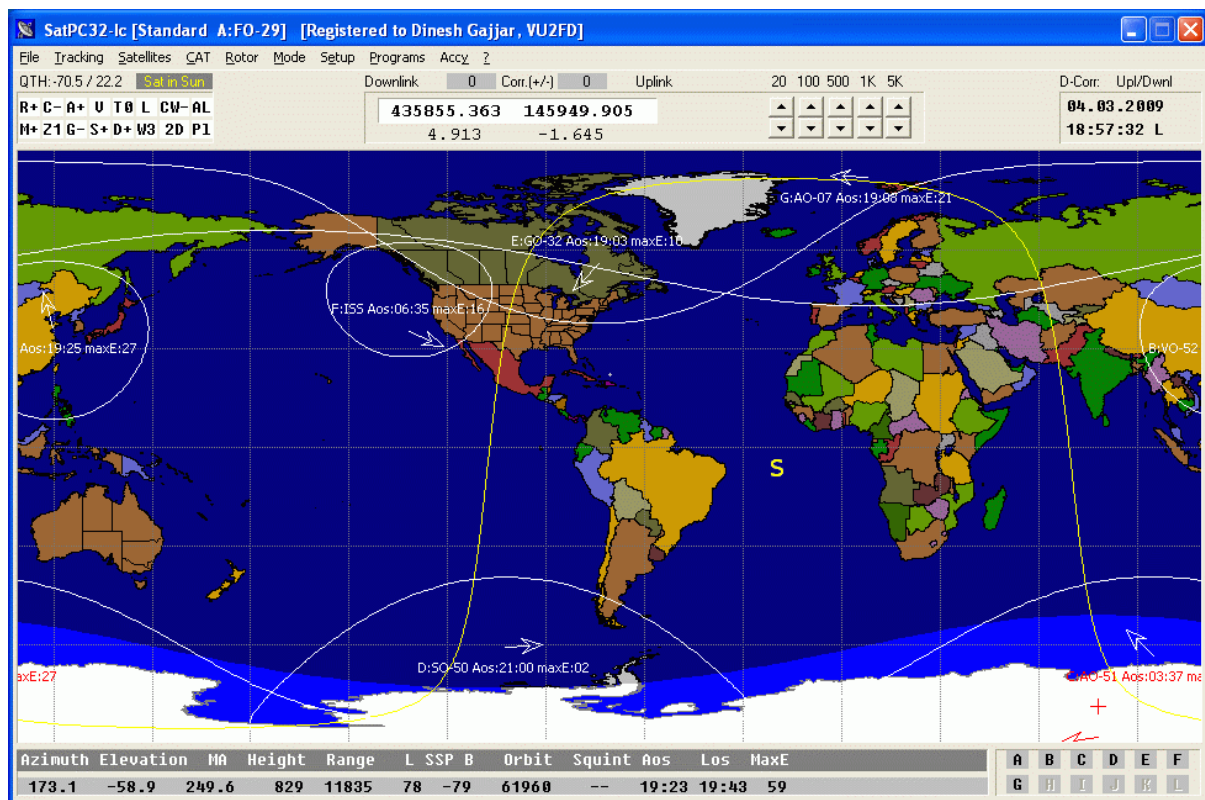
Amateur Radio Projects & Kits

FD- ST3

## Tech Info Document: SatPC32 Setup

### SatPC32 setup for ST3:

Starting SatPC32 will show a screen like the one below:



SatPC32 requires that we setup a “server” for communication with ST3.

**Following procedure will setup ST3 for SatPC32:**

Click “Setup” menu

Enter “Rotor Setup”

You will get a screen like this:

**Rotor Setup**

For hints: how to setup automatic rotor control open menu "?/Hints [Rotor]"

Rotor interface/controller:  
SAEBRTTrackBox Search

Settings:

LPT (1 - 4, only IF-100, FODTrack, RifPC)	2	2
Delay (only IF-100, FODTrack, RifPC)	30	
Turning point of azim. rotor (S or N)	S	
Minimum elevation	-3	
Horizontal antenna correction	0	
Vertical antenna correction	0	

Help

Port address: \$0278 Store

Optional settings:

Update antenna positions:  
 in time intervals  
 at sat. position change

Max. elevation:  
 90 degr.  
 180 degr.

Azimut rotor:  
 360 degr.  
 450 degr.

Time interval (sec.) 15 Pos. change (deg.) 5

Optional settings:

Azimuth angle:  
 constant  
 gain related

OK Store

Select “SAEBRT Track Box” from top pull-down menu and click “Store” (there are two “store”, click on the top one)

Message like this will appear:

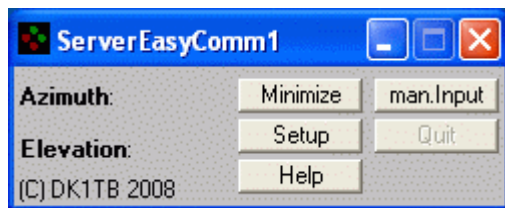
**SatPC32 [Standard]**

Restart SatPC32 when the settings changed!  
The server program will automatically be started by SatPC32.  
Note that possibly further settings and adjustments may be required in the setup of the server program.  
Please, read also the help text (click the "Help" button in the server program).

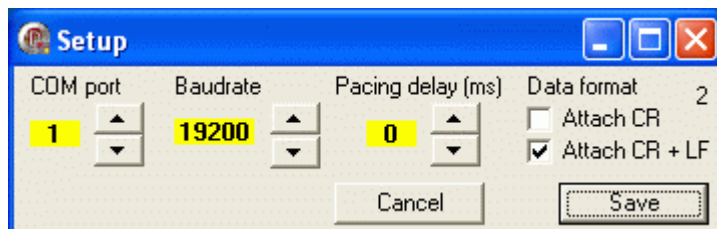
OK

**Close the SatPC32 and Re-start.**

When SatPC32 restarts, you will see that another window “EasyComm” will open & minimize.



In above window, open “Setup” enter comport & comport Baud Rate as follows:



Required settings for SatPC32 are complete.

Ensure that you setup windows COM Port settings at 19200 too.

It can be done by going to

“Control Panel”,

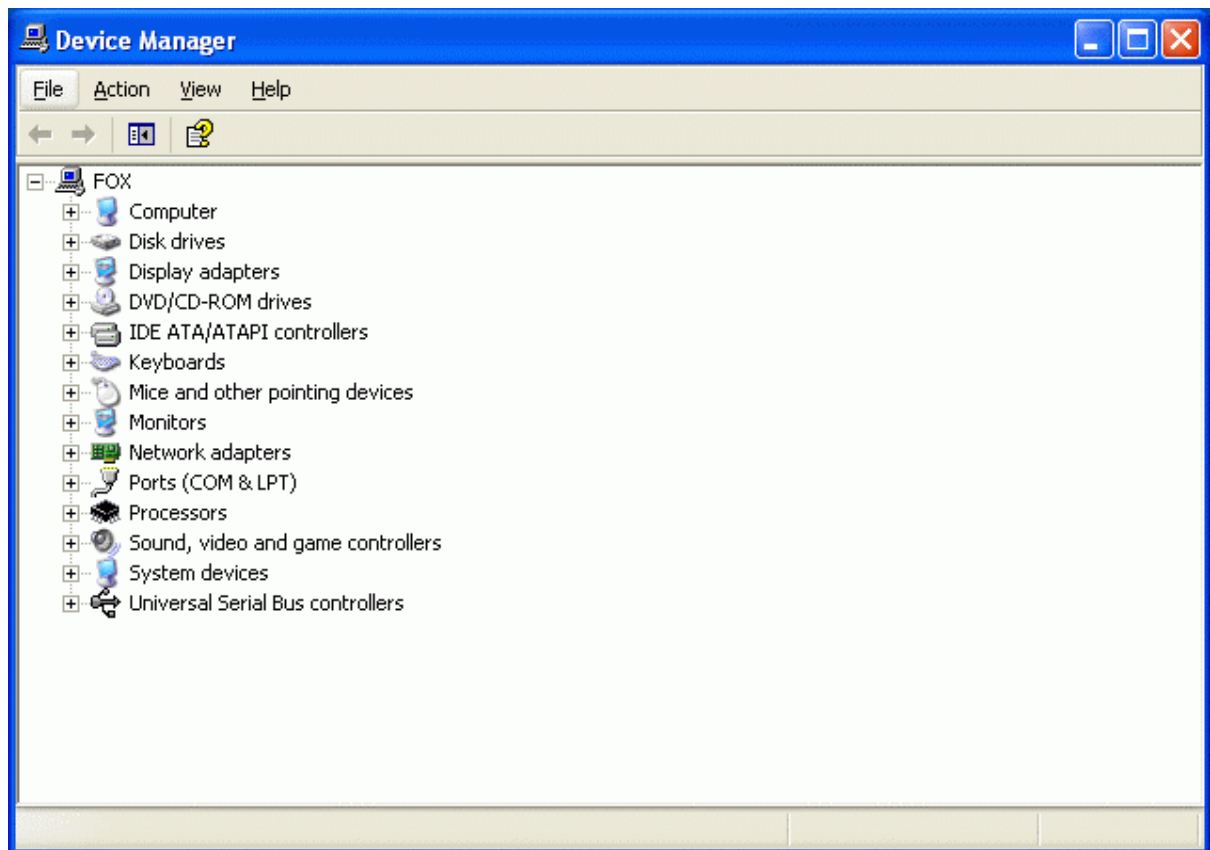
“System”,

“Hardware”, then to

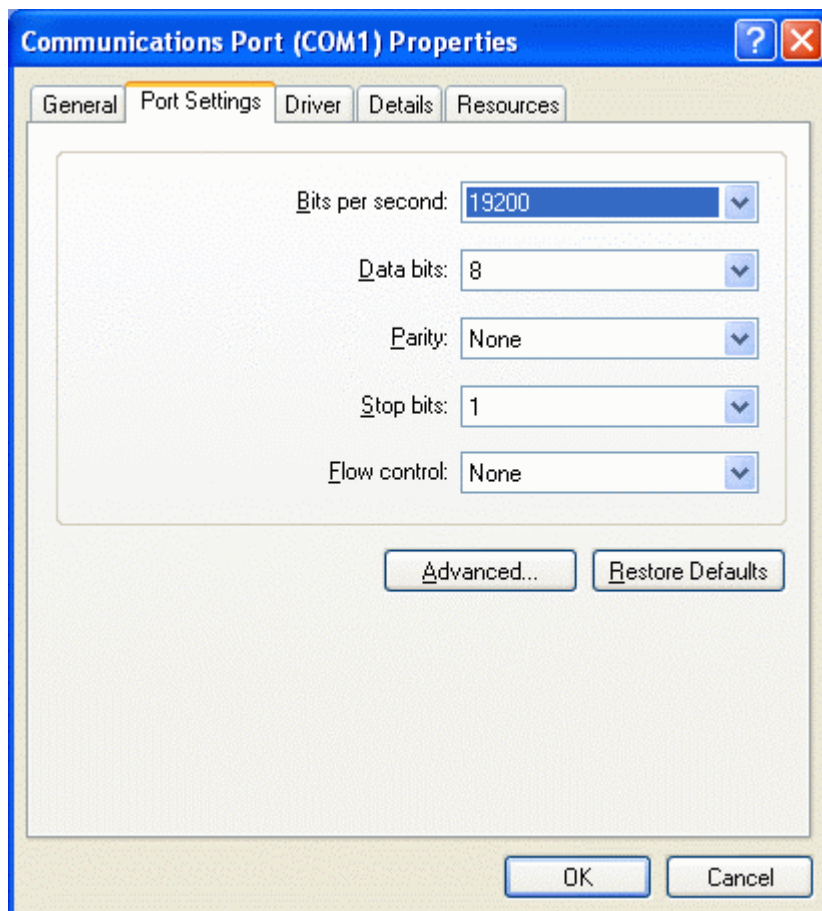
“Device Manager”

Click on “Ports (COM & LPT)”

Right Click on COM1

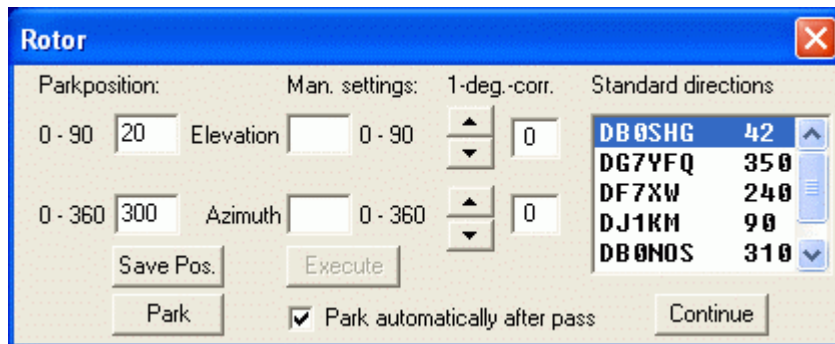


In COM1 properties, set 19200 as bits per sec.



Close all Windows and Close SatPC32.  
Restart SatPC32.

To verify communication between SatPC32 and ST3, open “Rotor” and you will get following screen:



Click “Park” and you will see EL 20 and AZ 300 on ST3 LCD.

Enter “0” at Man.settings “Elevation” and click “Execute”

You will see “0” on LCD (EL)

This completes the required setup of SatPC32 for ST3.

**Dinesh Gajjar**  
**2<sup>nd</sup> March 09**

For more info, please visit: <http://www.foxdelta.com>