



Fox Delta

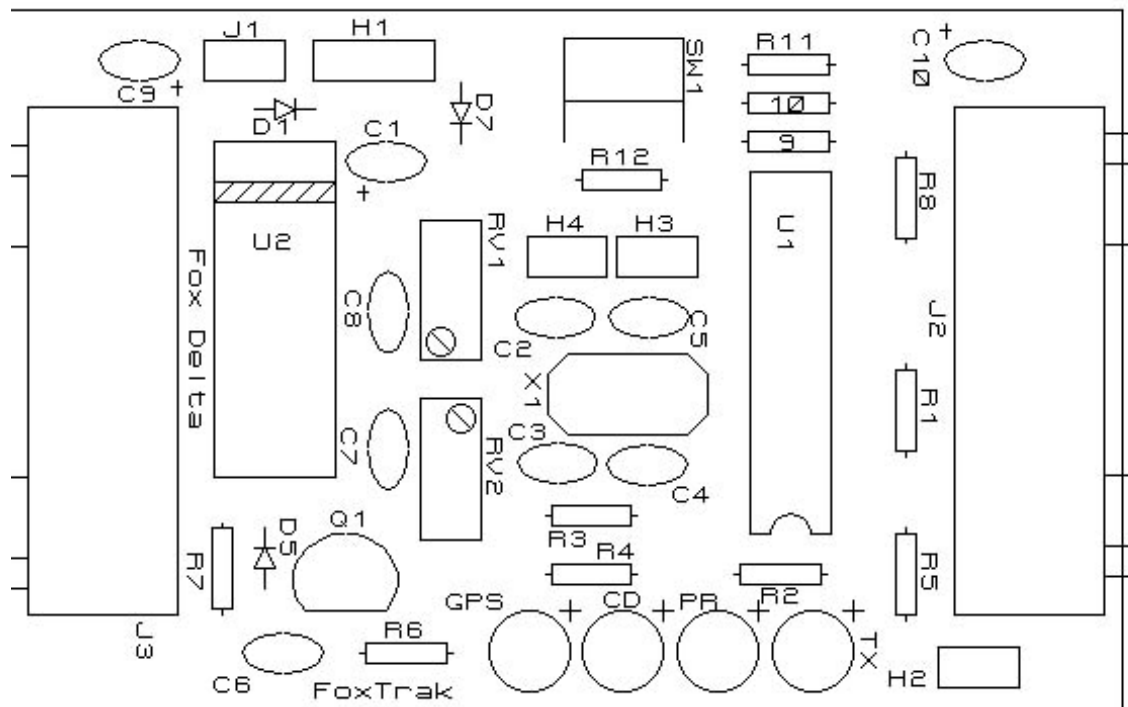
Amateur Radio Projects & Kits

FD – FoxTrak

Packing List & PCB Component Layout

Quantity	Check	Part ID / Details
1		FoxTrak PCB
1 Each=2		D9M(J2) & D9F (J3) R/A Connectors
2		1N4148
1		1N4007
1		PIC16F84A with firmware Foxtrak.hex
1		18PIN IC Socket
1		7805
3		1uf/35V Tantalum
5		0.1uf ceramic capacitors
2		22pf ceramic
1		Crystal 10.000MHZ (HC49US)
1		NPN Transistor BC547B
2		10k Bourns Presets 10T
4		LEDs 3mm (2 green, 2 red)
1		R/A Push Switch (SW1)
		Resistors (Philips 0.5W 5%)
5		1k
1		100k
2		10k
1		2k
1		3.9k
1		8.2k
1		2.2k
H1, 2, 3, 4		Headers with shorting pins
1		Null-modem with 2xD9F connectors.

Component Placement:



Please visit project page at: <http://www.foxdelta.com> Updated: 23rd Feb 07